

---

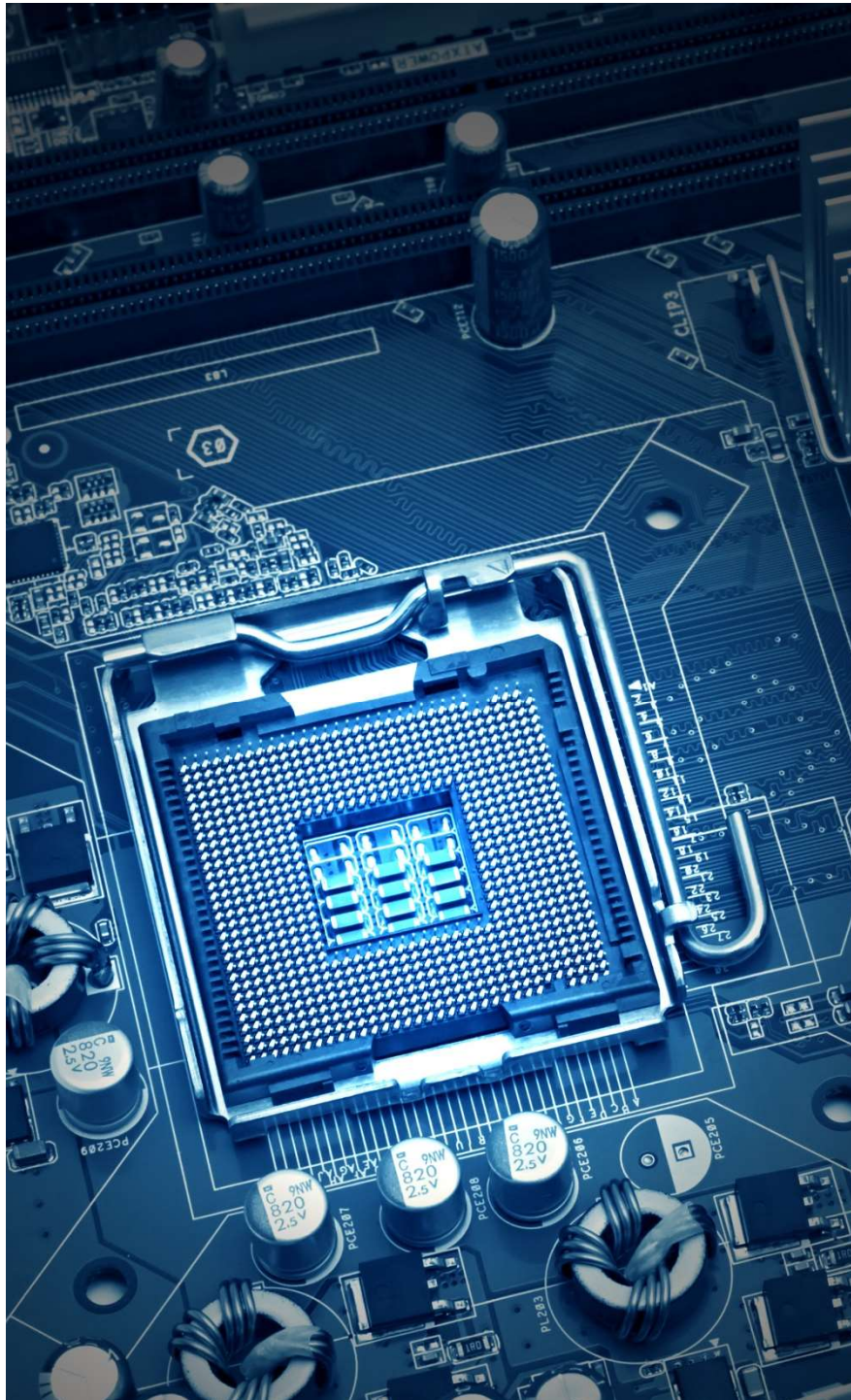
# ECSEL – JU

---

Bert De Colvenaer  
Executive Director  
Bologna 4 May 2017







What is ECSEL?

# Electronic Components and Systems for European Leadership

# ECSEL

---

Joint Undertaking

a Public-Private Partnership  
Keeping Europe at the Forefront  
of Technology Development

Established by the Council Regulation (EU)  
No 561/2014

# What is ECSEL? - Principles

---

## **Implement Horizon 2020:**

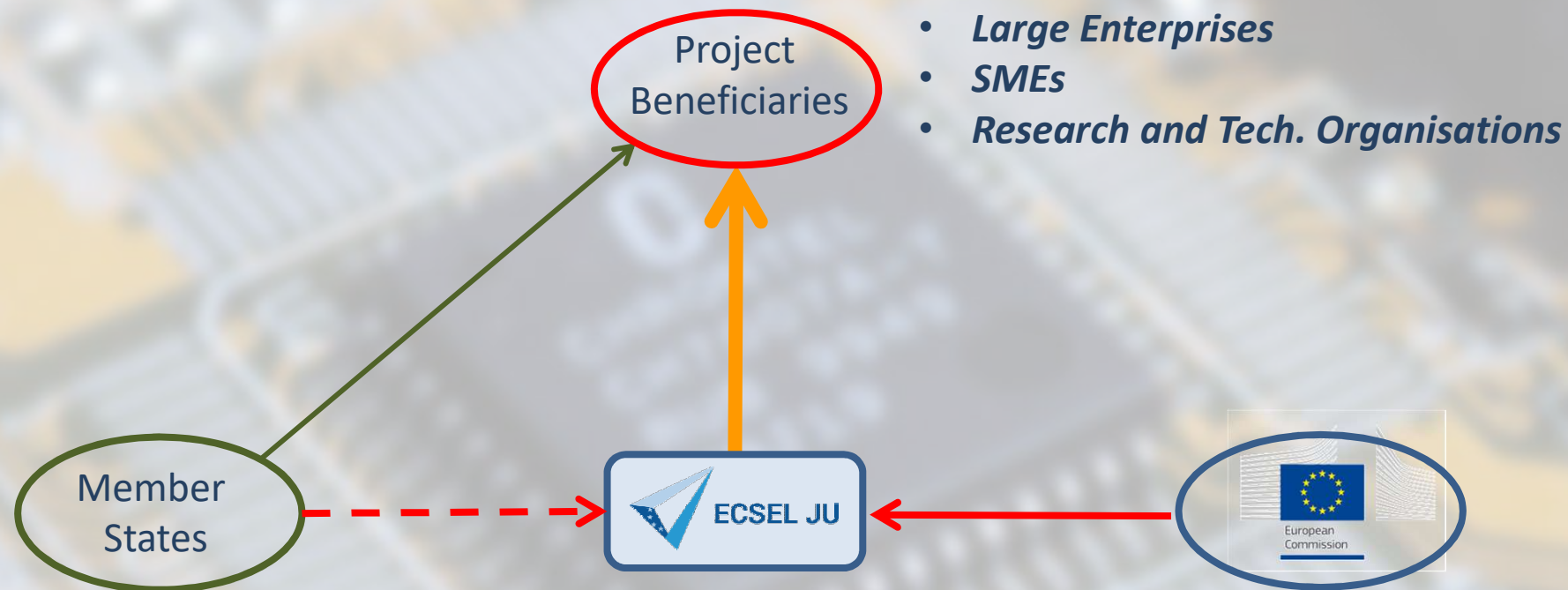
- Develop favourable conditions for investing in knowledge and innovation
- Achieve smart, sustainable and inclusive growth

## **PPP-model with 3-way funding:**

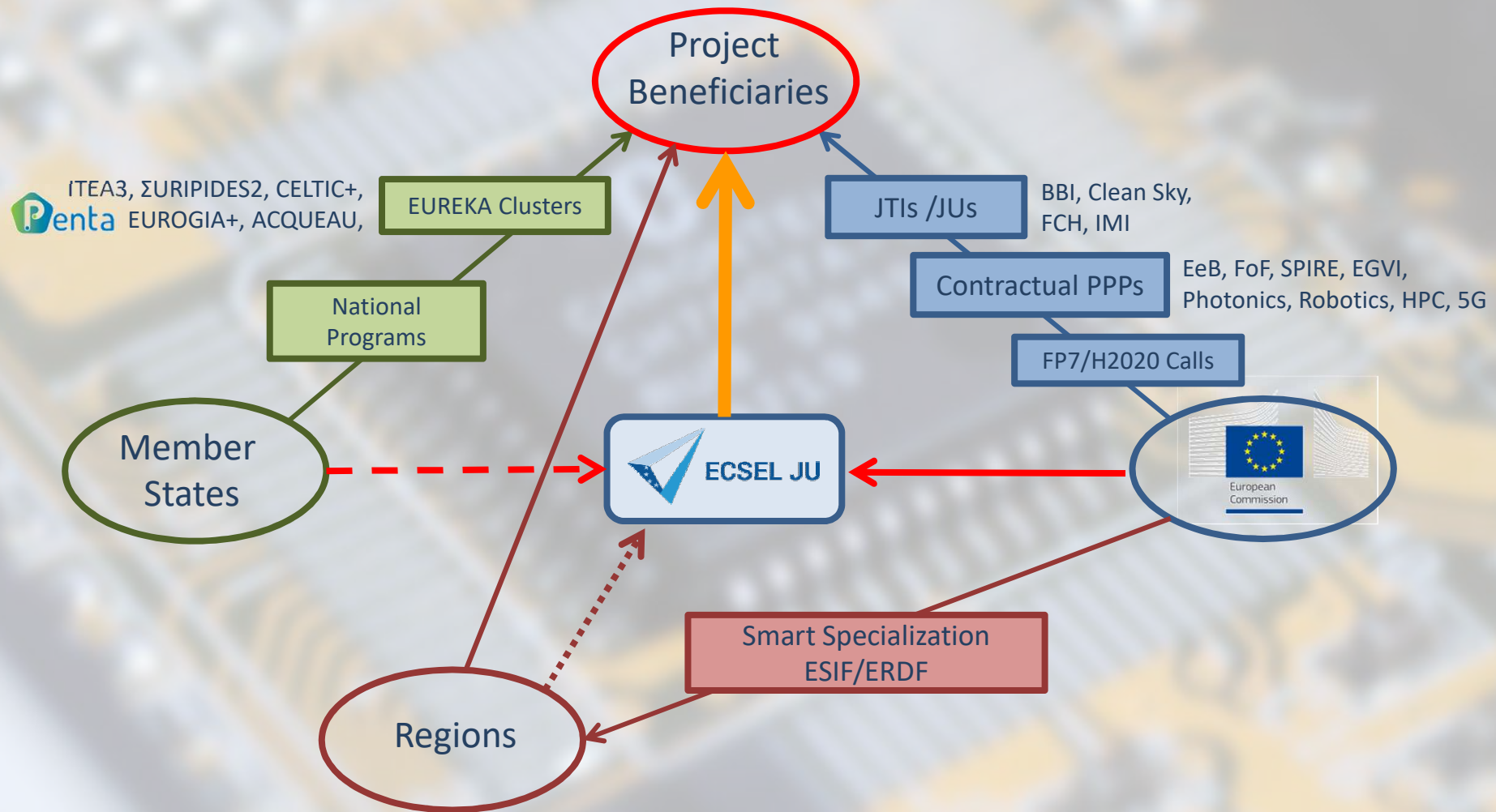
- The European Union (1.17B€, via EC/H2020)
- The ECSEL Participating States (>1.17B€)
- The Private Members (~ 5B€ minus grants)
- Build upon ARTEMIS/ENIAC JU experience and achievements



# ECSEL JU funding: EU and National funding together

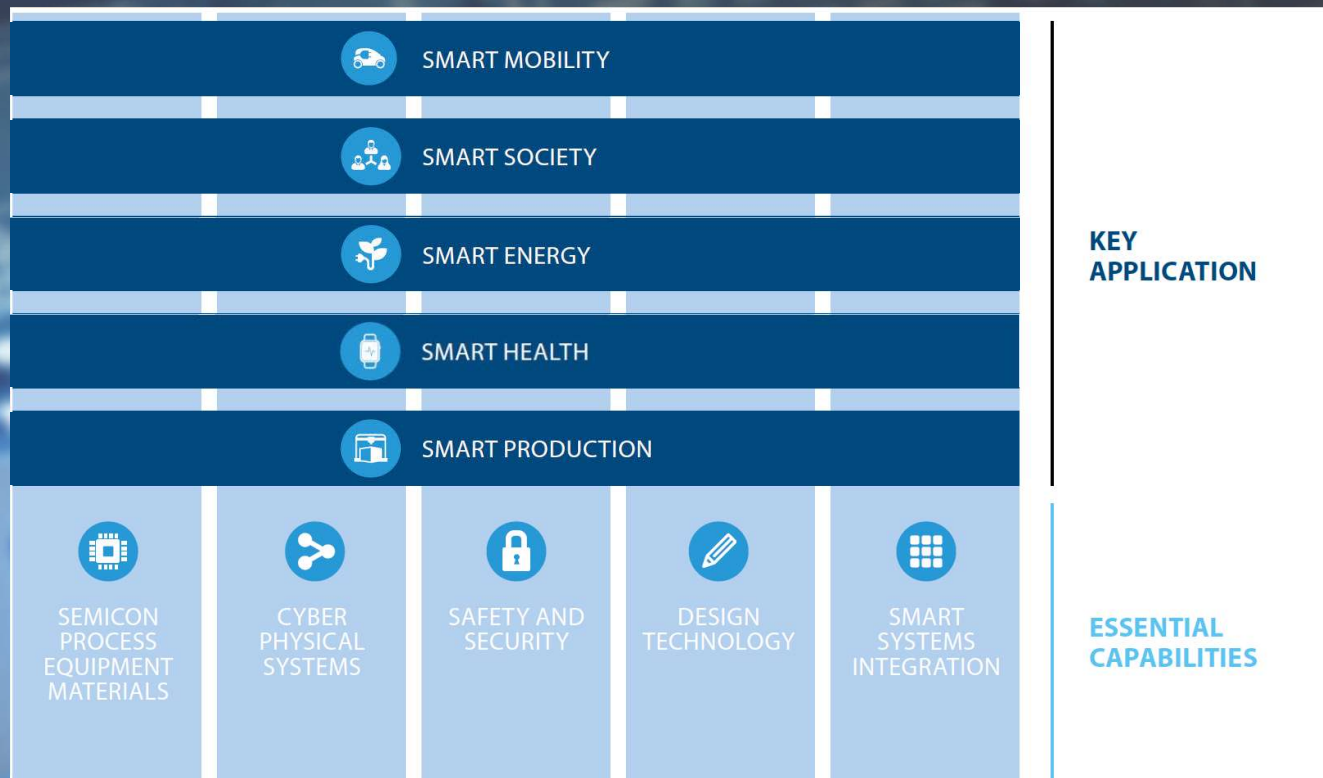


# ECSEL JU funding: complementing other instruments





# The ECSEL JU strategy





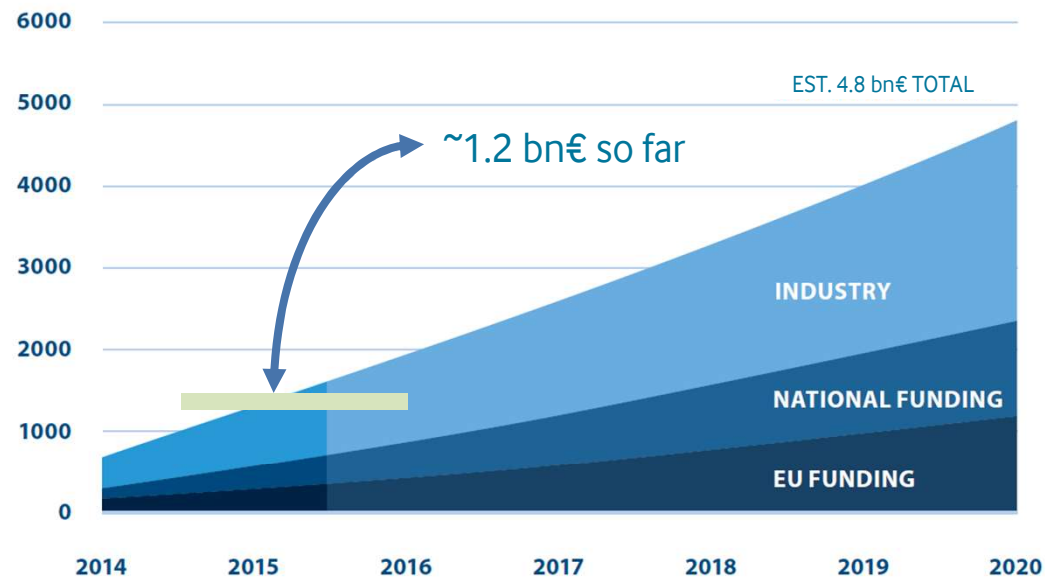
# ECSEL JU

## So Far

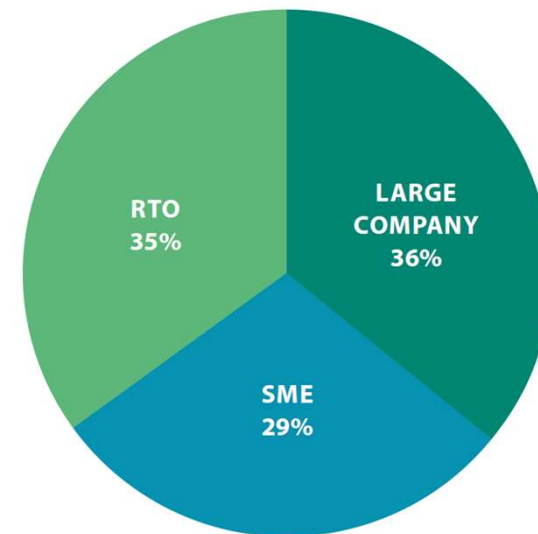


# ECSEL JU SO FAR

CUMULATIVE INVESTMENTS IN ECSEL PROGRAMME



THE ECSEL COMMUNITY OF  
LE / SME / RESEARCH AND TECHNOLOGY  
ORGANISATIONS





# ECSEL JU SO FAR

- 4 Calls, 25 Projects, 700 participations
- 1.2 bn€ RD&I effort with 560 m€ total funding

	Projects	PARTICIP- ANTS	Avg. Nr. Countries	Cost of RD&I (H2020)	EU Funding	National funding	Total Funding
2014 RIA	6	165	8,0	145	48	40	88
2014 IA	6	174	7,5	505	107	104	211
2015 RIA	8	166	6,5	169	52	39	92
2015 IA	5	195	7,8	422	91	87	172
<b>Grand Total</b>	<b>25</b>	<b>700</b>	<b>7,4</b>	<b>1.240</b>	<b>297</b>	<b>270</b>	<b>563</b>

# Overview ECSEL JU Calls 2016

	Project proposals	Total cost M€	EU Funding requested M€	National Funding requested M€
RIA 2016	<b>28</b>	605	177	176
IA 2016	13	1232	281	270
Total 2016	41	1837	457	446

	RIA	IA
EU/ECSEL	65 M€	85 M€
All MS	About 160 M€	



# ECSEL JU “Lighthouse Initiatives”

- Build on well identified market-pull related to societal needs, with a strong pan-European dimension
- Create ecosystems along the relevant value and supply chains, where appropriate:
  - Working towards clustering of projects
  - Having a strategic IP management policy
  - Establishing a standardization strategy
  - Addressing the relevant non-technical aspects (legislative, regulatory, social, ...)





# ECSEL

## Calls in 2017





# Call coordinators

- Call coordinator: Georgi KUZMANOV
- Backup call coordinator: Fabrizio MARTONE
- Call related questions: [calls@ecsel.europa.eu](mailto:calls@ecsel.europa.eu)
- Call page: [www.ecsel.eu](http://www.ecsel.eu)



# Calls?

- TWO calls
  - Research Innovation Action (RIA)
  - Innovation Action (IA)
- Both calls will be in TWO phases:
  - PO (Project Outline) – Compulsory and Gating
  - FPP (Full Project Proposal)





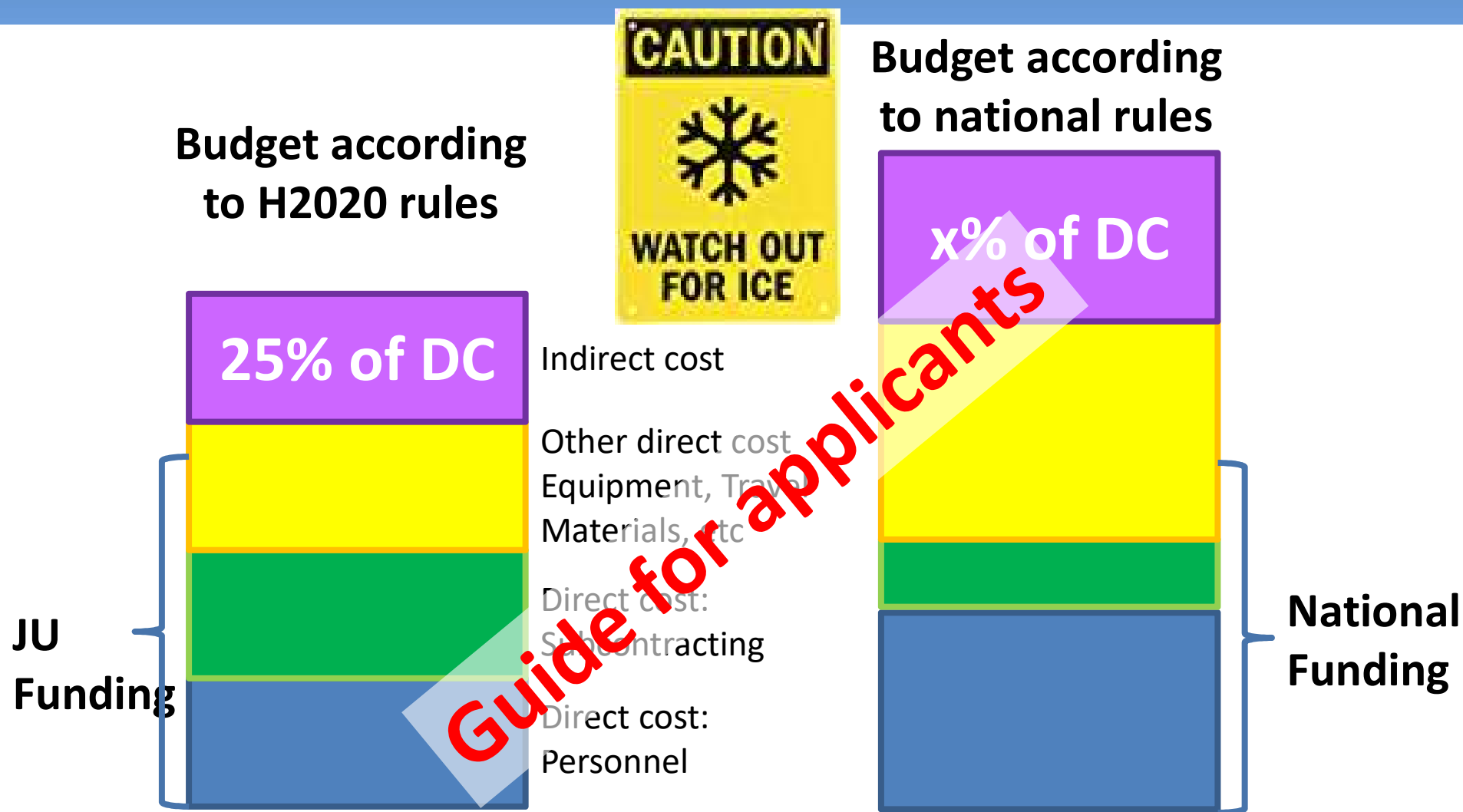
# EU Budget?



	Type	TRL	EU
ECSEL Call 2017-1	IA	5-8	92.5M€
ECSEL Call 2017-2	RIA	3-4	67.5M€



# Two Budgets !!



# National Budget

- France will provide a budget
- Few countries did not answer yet

ECSEL Participating State	Estimated expenditure (M€)			
	IAAs	RIAs	Both IAAs-RIAs	Total
Austria (2)			7	7
Israel			8	8
Italy (5)	10	17.4		27.4
Latvia			0.42	0.42
Malta				0
Netherlands	10	10		20
Norway			2.2	2.2
Poland			1.5	1.5
Portugal				0
Romania			2.6	2.6
Slovak Republic			0.8	0.8
Spain (4)			6	6
Sweden			5.5	5.5
United Kingdom			0	0
Turkey			3	3
EU	92.5	67.5		160
<b>Total</b>	<b>116.5</b>	<b>98.9</b>	<b>88.82</b>	<b>306.42</b>

(1) Pending the corresponding financing decision to be adopted by the European Commission in 2017 and 2018.

(2) Subject to final approval by financial authorities

(3) The pre-commitment is divided as follows: BMBF EUR 26 million, Saxony EUR 12 million (for participants from Saxony only)

(4) 1M from MINECO, 5M from MINETAD. The contribution of MINETAD could change when the budget for 2017 is approved and the economic scenario changes.

(5) 10M€ from MISE, 2.4M€ from MIUR. 15M€ from ESI Funds.

(6) A financial commitment will be available. The amount will be communicated later. Participants are invited to contact the French Directorate-General for Enterprise.





# EU Reimbursement rates

The **MAX** funding percentages of the EU contribution are **different than under H2020**.

Type	RIA	IA
For profit (non SME)	25%	20%
SME	30%	25%
University/Other	35%	35%

EU Contribution as % of the eligible cost according to H2020  
(beneficiaries may ask for a lower contribution)

National contributions: vary per state, see the Annex of Work Plan 2017



# CAPPING



## IA

- The EU contribution per project is capped at **30M€**
- the maximum EU funding per partner in a project is limited to **50%** of the total EU funding for the project

## RIA

- The EU contribution per project is capped at **15M€**
- the maximum EU funding per partner in a project is limited to **40%** of the total EU funding for the project



# Calls topics

## Key Applications

1. SMART MOBILITY
2. SMART SOCIETY
3. SMART ENERGY
4. SMART HEALTH
5. SMART PRODUCTION

**All topics are open  
for both calls**

## ESSENTIAL CAPABILITIES

6. SEMICONDUCTOR  
MANUFACTURING,  
TECHNOLOGY, EQUIPMENT  
AND MATERIALS
7. DESIGN TECHNOLOGIES
8. CYBER-PHYSICAL SYSTEM
9. SMART SYSTEMS  
INTEGRATION
10. **Safety and Security**





# Topics

- Answer two questions:
  - what technology (capabilities) do you develop in this project?
  - what kind of application topics are developed?
- Note that National priorities may be applicable to specific topics (refer to the Annexes of the Work Plan.
- Objectives of each topic can be found in the MASP.
- Proposals that cut across disciplines, support platform building, interoperability, establishment of open standards are particularly encouraged.



# Important Dates

Date	Activity
22 February	Call launch
<b>11 May</b> at 17:00:00	<b>Deadline</b> Project Outline (PO)
June	Feedback on PO
<b>21 September</b> at 17:00:00	<b>Deadline</b> Full Project Proposal (FPP)
November	Selection of projects for funding
December - April	Grant Preparation phase



# The Project Outline

- **Blocking** if under threshold
- Participants, budgets: **as complete and precise as possible BUT** changes are possible afterwards, though limited!
- All 3 evaluation criteria
  - Section 1. **Excellence**,
  - Section 2. **Impact**,
  - Section 3. **Implementation**
  - need to be filled in following the template.





# The Project Outline

- Fill in the other Sections if available info:
  - Section 4. Members of the consortium;
  - Section 5. Ethics and Security;
  - Section 6. **Publishable Summary** (to be completed for PO phase – do not forget it!!!)



You will get Expect feedback from national authorities  
(not from ECSEL)



# What makes a good proposal?

- Evaluation versus Monitoring
- More or Less details?
  - ↳
    - + Better comprehension by experts
    - + Easier to monitor later and if selected
    - More to read by experts
    - Higher odds of making mistakes, incoherencies, etc
    - More expensive, more time
- Content
  - What does this project bring in terms of innovation and future impact?
  - How will you measure/monitor this?



# European Structural and Investment (ESI) Funding

- If activities with costs are funded through ESI funds, then those activities **cannot obtain ECSEL-EU funding**.
- Various possibilities to include activities funded by ESI funds described in the Guide for Applicants
- Main issue: **no overlap**
- Risk mitigation: what happens if the activity does not get the ESI funding?





# From proposal to project

- 8 months
- No negotiation but adaptation of project to PAB decision



# The Lighthouse Initiatives

## Work Plan 2017 **Annex 1**

### **WHY?**

- focus part of the ECSEL JU activities on achieving concrete socio-economic objectives,
- lighthouse initiatives should improve and accelerate the impact of ECSEL JU

### **HOW?**

by engaging all needed actors in the supply/value chain to achieve these goals and by connecting (without duplicating) investment in R&I in ECSEL JU to investments done for example in application areas in the Societal Challenges in HORIZON 2020 as well as to other policy measures such as standardisation or deployment, and when needed regulatory measures.



# The Lighthouse Initiatives

- give industry in Europe differentiating factors to compete in next generation integrated solutions for electronic components and systems and notably in platforms for "Smart X" markets by building on and combining its strong presence in cyber-physical systems, smart systems integration and MEMS as well as low power and secure components.
- enable closer cooperation between Europe's key actors, including providers, integrators, users' industries and end users
- strengthen Europe's position in key parts of future digital value chains and notably digital platforms
- should address concrete and convincing measures to facilitate deployment and should include an effective outreach strategy.



# Two lighthouse initiatives 2016

- **Industry 4.E and Mobility.E were adopted by the ECSEL Governing Board**
- Projects supported by national or regional funding, by Eureka, by H2020 or by ECSEL can become part of the Lighthouse.
- A **Lighthouse advisory service** will give support on invitation or on request to those projects who's impact is dependent on the successful implementation of additional measures like legislation, standardisation, inclusion of other societal organisations etc. *The advisory service will neither be involved in project selection nor in the management of individual projects.*





# Industry 4.E

The “**Industry 4.E**” **Lighthouse Initiative** supports the efforts around Industry 4.0, the trend towards interconnected manufacturing sites integrated in automated supply chains. It focuses on the **digitisation of European industrial production**. The approach in the ECSEL JU program addresses both automation and data exchange in manufacturing processes.

Proposals on this Lighthouse Initiative should address topics as described in the chapter on the smart production key application and/or its underpinning essential capabilities.



# Mobility.E

The “**Mobility.E**” **Lighthouse Initiative** supports the efforts towards **autonomous transportation**, including infrastructure. Next to technical aspects it focuses on areas like safety and security, connectivity, standardisation and regulation where public-private interaction is essential for finding solutions. Proposals on this Lighthouse Initiative should address topics as described in the chapter on the smart mobility key application and/or its underpinning essential capabilities.



# Adhering to an existing LI

- Does not affect the evaluation of your proposal!
- Your project proposal SHALL NOT refer to the Lighthouse Initiative
- Introduce an EoI to adhere to a LI as a Part C of the proposal



# Proposing a new LI

- Does not affect the evaluation of your proposal!
- Your project proposal SHALL NOT refer to the Lighthouse Initiative
- Introduce an EoI for a new LI as a Part C of the proposal





# H2020 Information

H2020 Participant Portal:

<http://ec.europa.eu/research/participants/portal/desktop/en/home.html>

Online manual for H2020:

[http://ec.europa.eu/research/participants/docs/h2020-funding-guide/index\\_en.htm](http://ec.europa.eu/research/participants/docs/h2020-funding-guide/index_en.htm)

Annotated JU GA (AmGA):

[http://ec.europa.eu/research/participants/data/ref/h2020/grants\\_manual/amga/h2020-amga\\_en.pdf](http://ec.europa.eu/research/participants/data/ref/h2020/grants_manual/amga/h2020-amga_en.pdf)



# H2020 Helpdesks

For questions on any aspect of grant applications and the EU Research Framework Programmes, including beneficiary registration and data updates, please refer to the :

<http://ec.europa.eu/research/index.cfm?pg=enquiries>

For any IT-related problems that you might experience with the Submission system, please contact the :

<http://ec.europa.eu/research/participants/api/contact/index.html>



# ECSEL Information and Helpdesk

Our website (specific webpage with links to documents and actualized information)

<http://www.ecsel.eu/>

Questions specific to ECSEL:

[calls@ecsel.europa.eu](mailto:calls@ecsel.europa.eu)



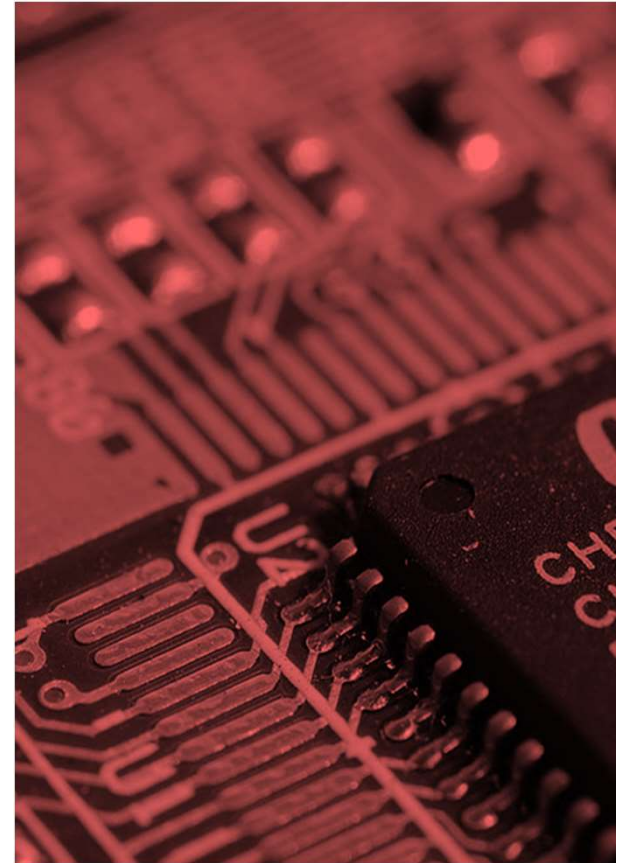
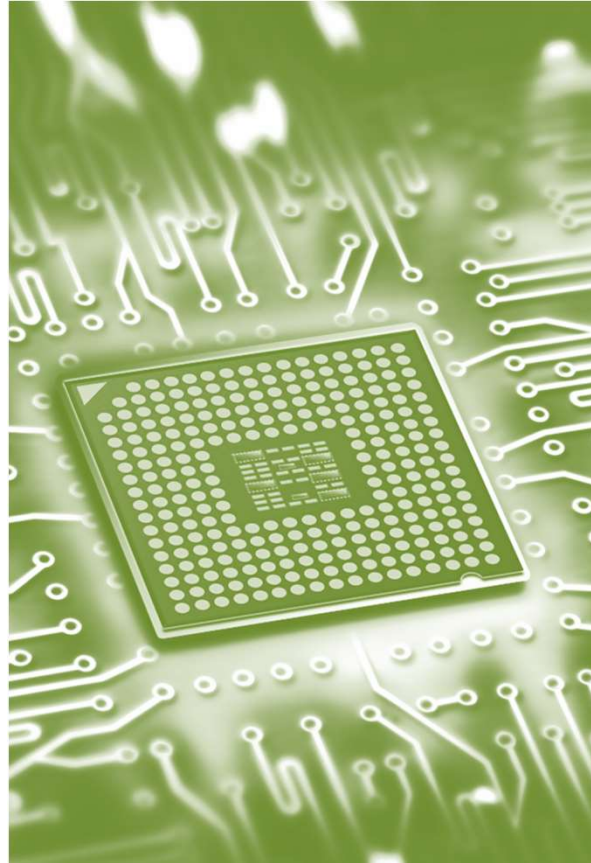
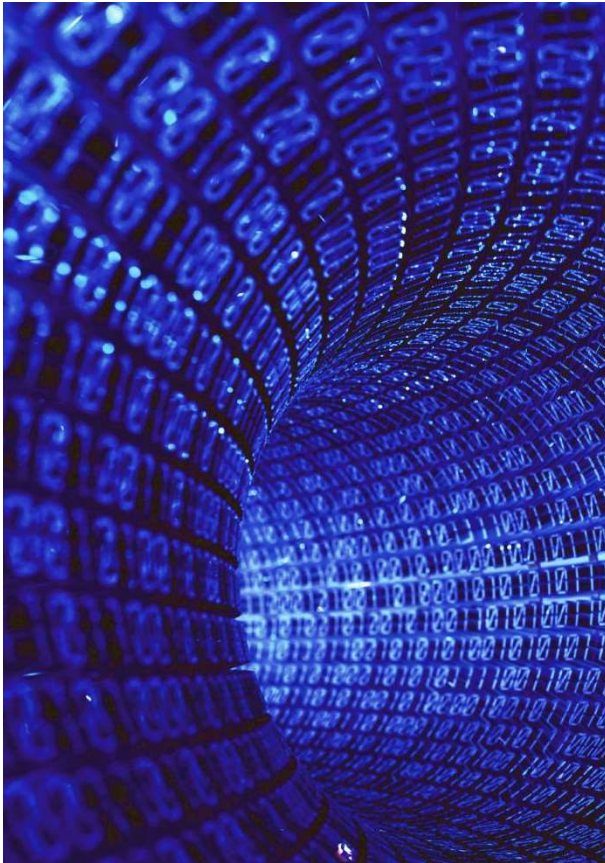
# Summary:

---

- Joint
- Customer
- Communication







---

*Thank you*

---

