



ECSEL Italy Day
National day of ECSEL Mirror Group Italy

Italy-ECSEL

ST's success story 2016

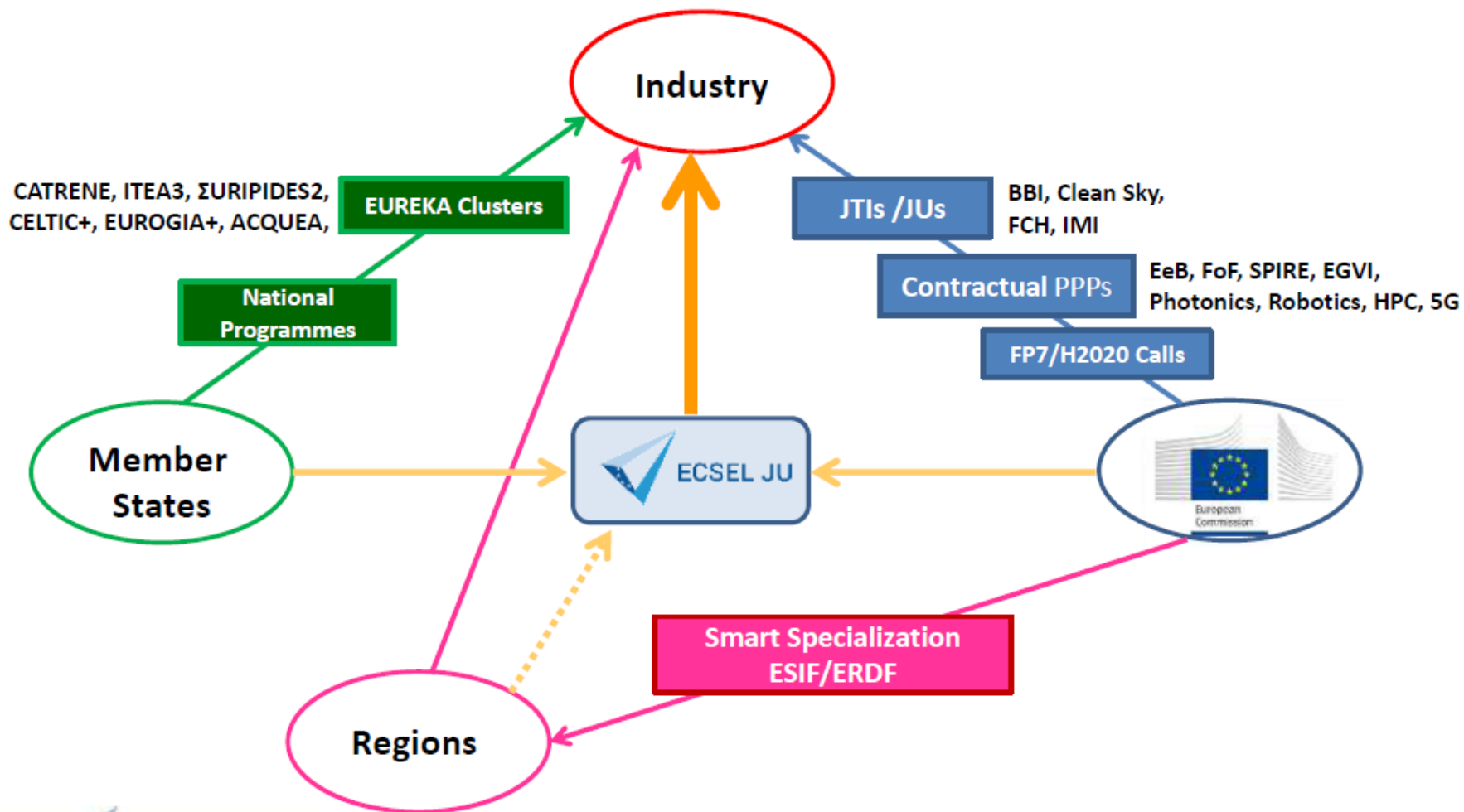
Roberto Zafalon
EU Technology Programs
STMicroelectronics, Italy

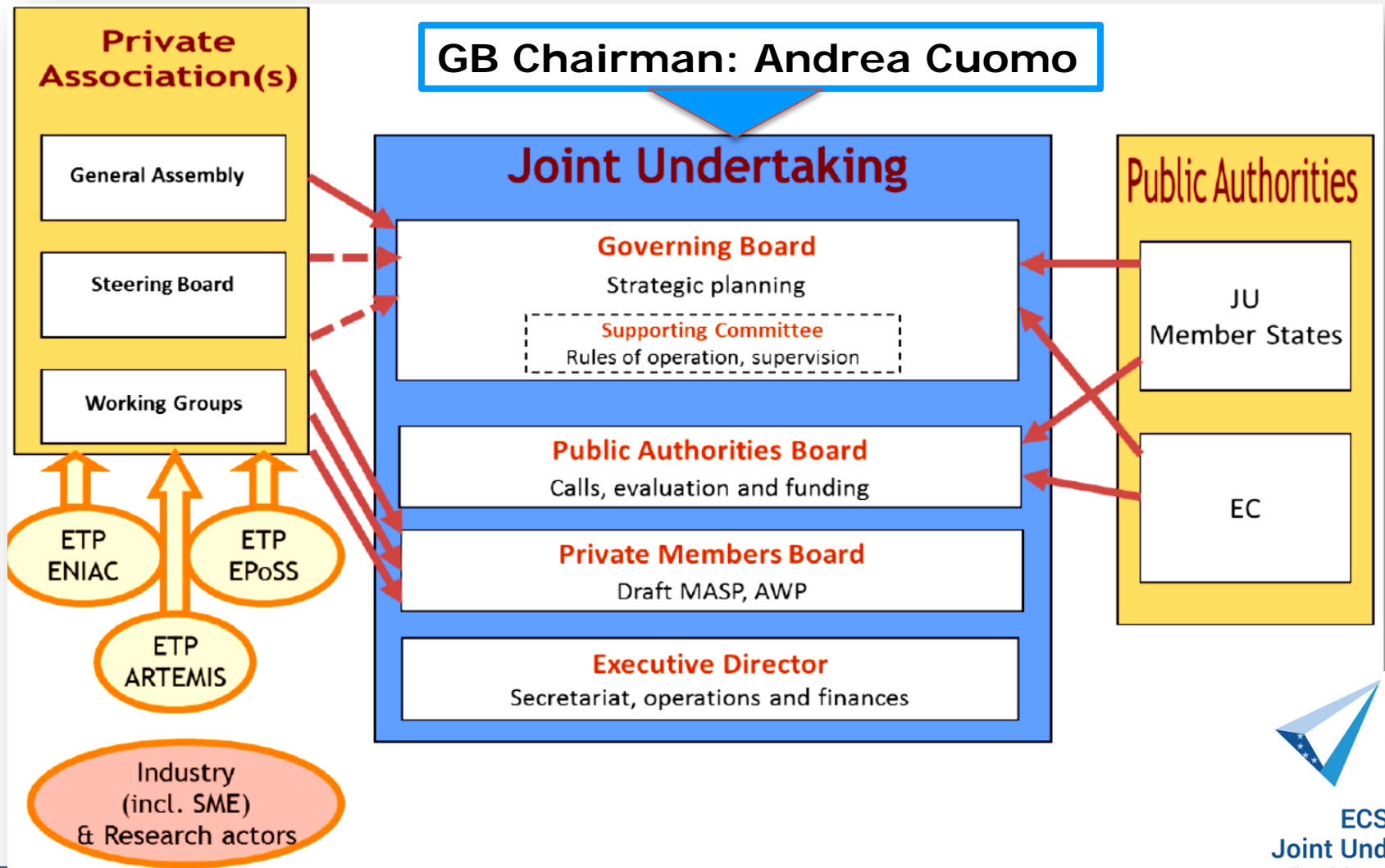


life.augmented



European support landscape







STMicroelectronics in ECSEL 2016

- Come il piano industriale di un'industria può fare leva su MISE ed ECSEL?
 - Prodromi: contatti con Regione Lombardia e MISE sin da metà 2013
 - Accordo di Programma MISE/Lombardia è stato il fattore abilitante per ottenere il co-finanziamento ECSEL-JU



R3-PowerUP

BCD and Power discretes 300mm Pilot Line @ Agrate

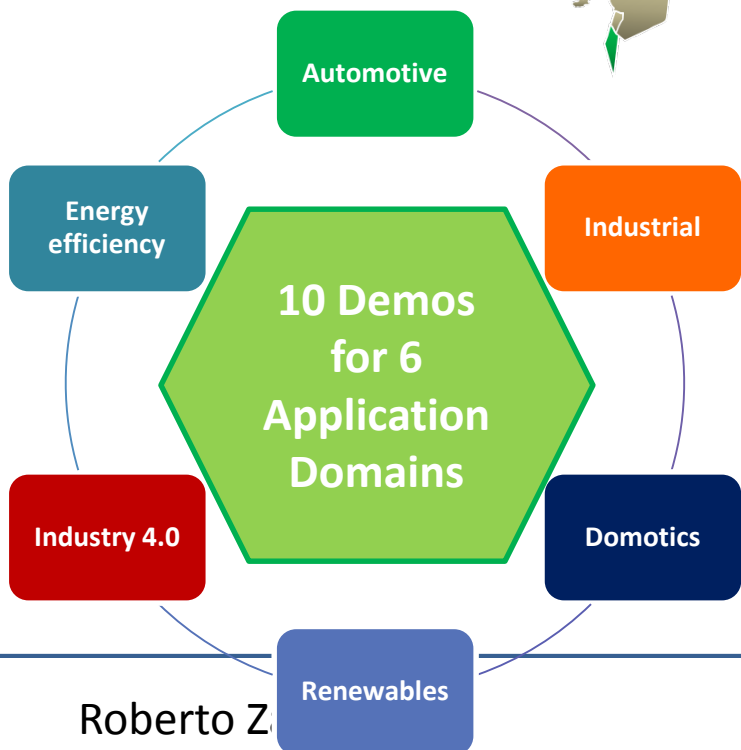


- Development and demonstration of a brand new 300mm advanced manufacturing facility addressing a **multi-KET Pilot Line** (i.e. Nanoelectronics, Nanotech, Adv. Manufacturing)
- The Pilot Line will build on Digital Factory and Industry 4.0 principles, enforcing a flexible, adaptive and reliable facility that will push forward the state of the art of nanoelectronics manufacturing in Europe.
- Major improvement in productivity and competitiveness for **integrated IC solutions for smart power and power discretes technologies.**
- The application of such technologies will be a breakthrough enabler for Energy Efficiency and CO₂ Reduction worldwide, in line with COP21's resolution.
- By mid-2020 to achieve R&D Fab capacity of 500 wafer/week @300mm.





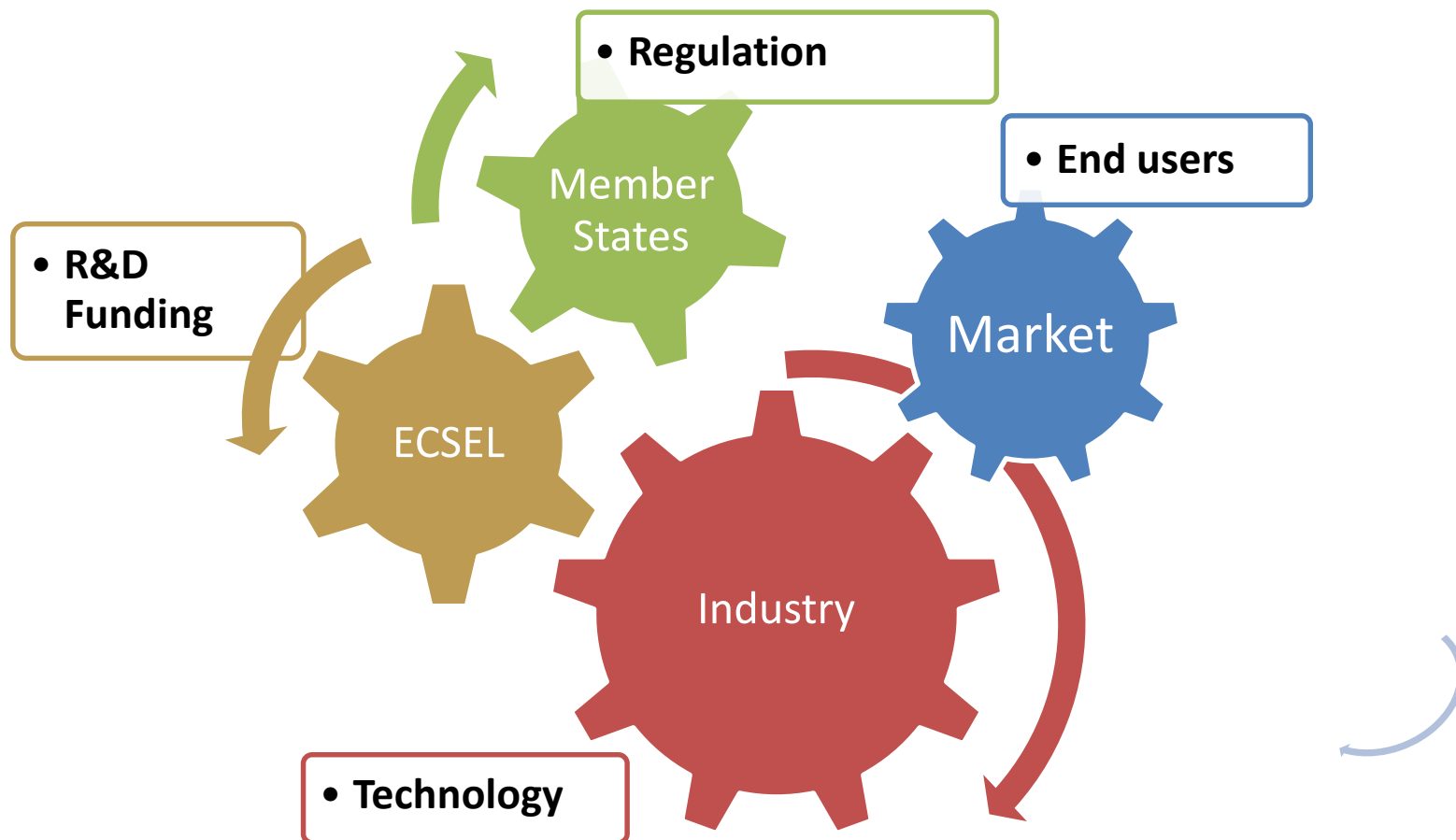
R3-POWERUP fact numbers



- ### KPIs
- More than 180 MEUR private investments to exploit the project.
 - 300 MEUR additional mid-term business expected out of the project results.
 - **35 partners from 14 countries**
 - 20-25% increased sustainability
 - 10-15% increased productivity thanks to fab automation



THIS IS THE ECSEL ECOSYSTEM!





Presente e Futuro

- Il modello AdP sarà applicato anche in **ECSEL 2017**
- **Auspicio per il 2018:**
smussare i vincoli (pesanti) e la complessità del AdP a favore del riconoscimento di ECSEL come bando di riferimento anche per i fondi MISE (riducendo od eliminando il vincolo dell'AdP).