

---

# ECSEL – JU

---

Fabrizio Martone  
Programme Officer  
Torino 1 March 2018



# Outline

- ECSEL introduction
- Call 2017 Summary
- Call 2018 Preview
- Q&A







What is ECSEL?

# Electronic Components and Systems for European Leadership

# ECSEL

---

Joint Undertaking

a Public-Private Partnership  
Keeping Europe at the Forefront  
of Technology Development

Established by the Council Regulation (EU)  
No 561/2014

# What is ECSEL? - Principles

---

## **Implement Horizon 2020:**

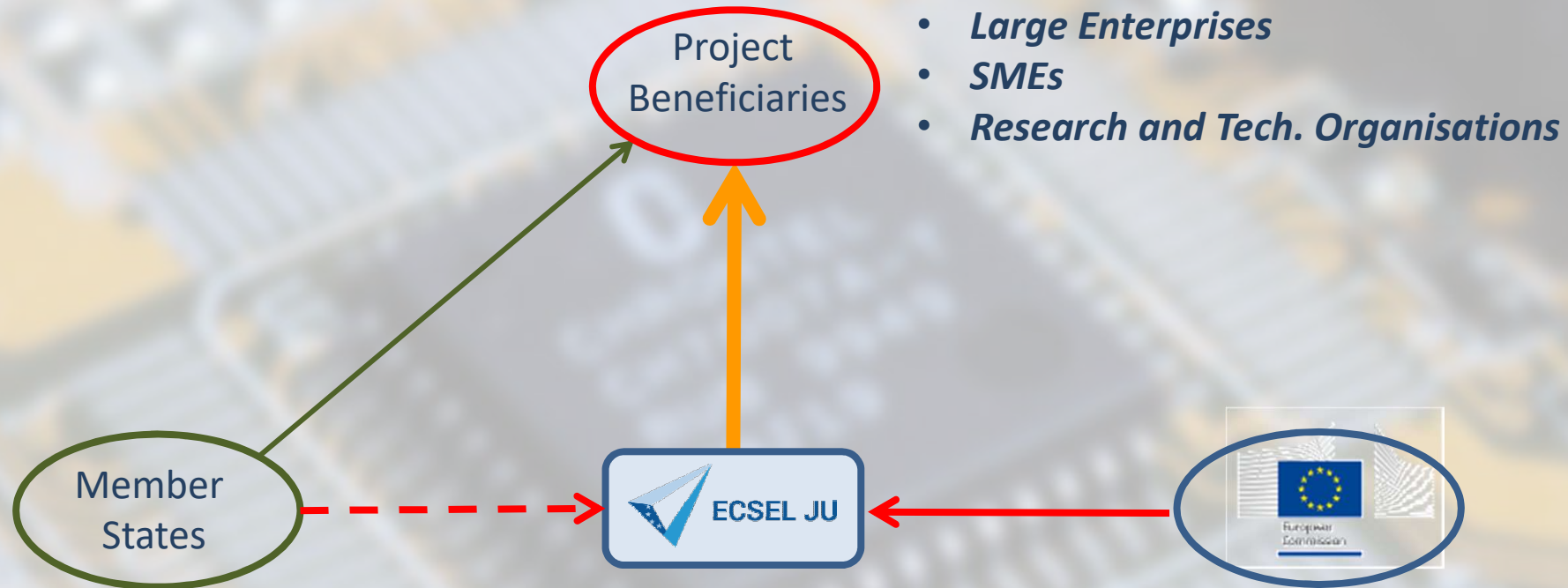
- Develop favourable conditions for investing in knowledge and innovation
- Achieve smart, sustainable and inclusive growth

## **PPP-model with 3-way funding:**

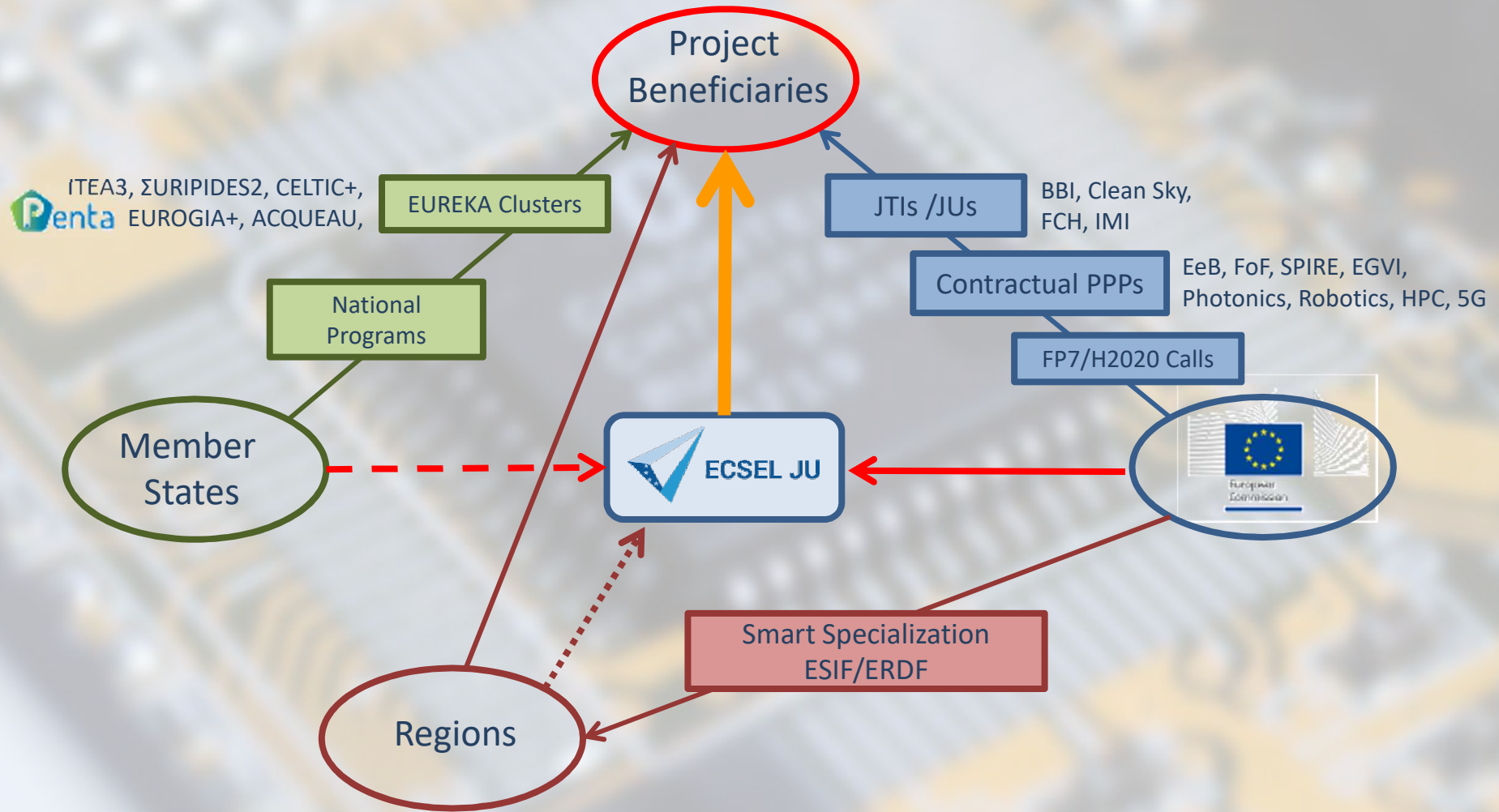
- The European Union (1.17B€, via EC/H2020)
- The ECSEL Participating States (>1.17B€)
- The Private Members (> ~ 2.5B€)
- Build upon ARTEMIS/ENIAC JU experience and achievements



# ECSEL JU funding: EU and National funding together

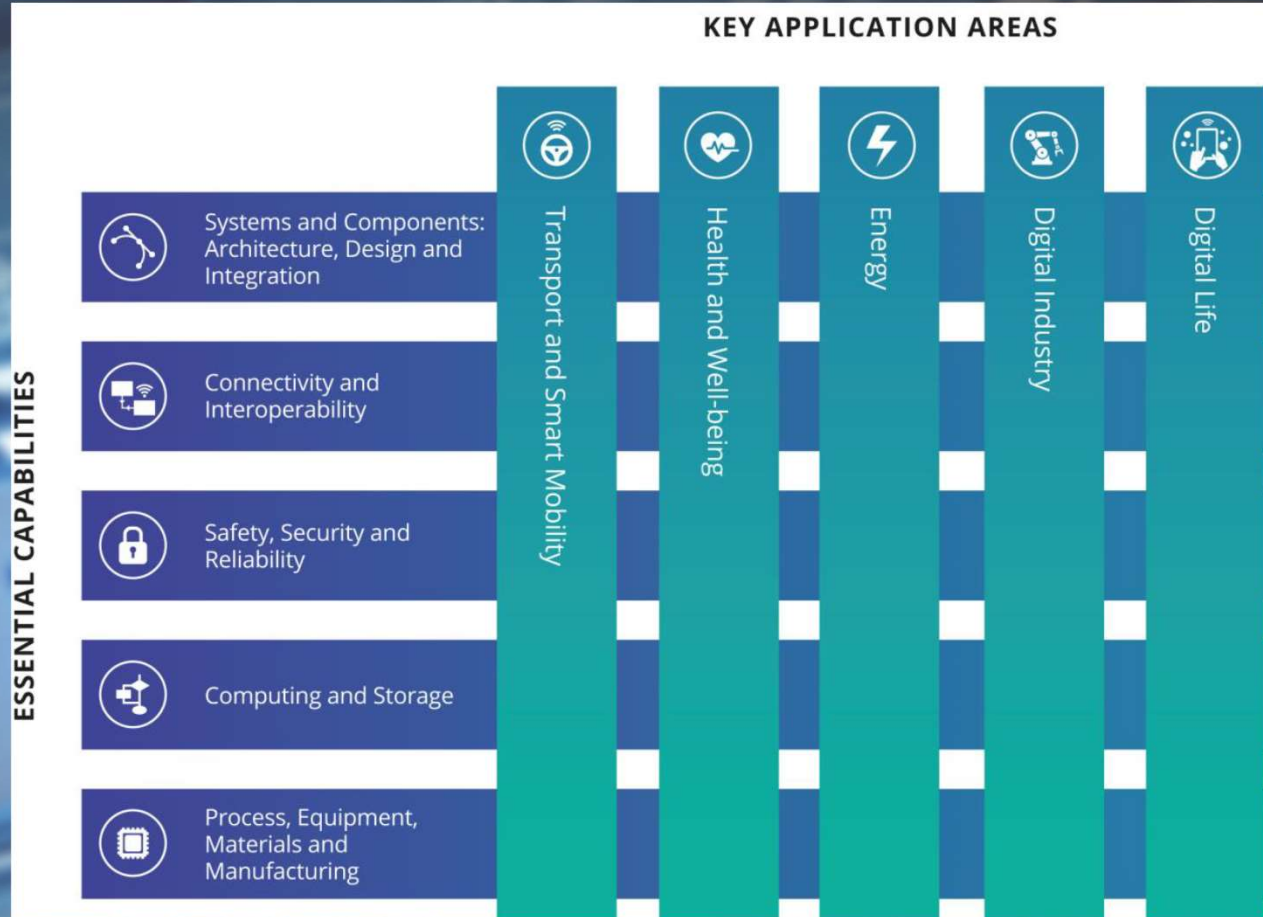


# ECSEL JU funding: complementing other instruments





# The ECSEL JU strategy



# Overview ECSEL JU Calls 2017

**SUCCESS RATE : 32%**

	Project selected	Total cost M€	EU Funding requested M€	National Funding requested M€	ESIF M€
RIA 2017	6	216	63	57	4
IA 2017	6	469	110	105	3
Total 2017	12	685	173	162	7



# ECSEL JU “Lighthouse Initiatives”

MOBILITY.E

INDUSTRY4.E

- Build on well identified market-pull related to societal needs, with a strong pan-European dimension
- Create ecosystems along the relevant value and supply chains, where appropriate:
  - Working towards clustering of projects
  - Having a strategic IP management policy
  - Establishing a standardization strategy
  - Addressing the relevant non-technical aspects (legislative, regulatory, social, ...)

A close-up, high-angle photograph of a microchip on a printed circuit board (PCB). The chip is square with a grid of pins on its top surface. The PCB is dark blue with intricate circuit patterns. The lighting is dramatic, highlighting the chip and its immediate surroundings.

# ECSEL

## Calls in 2018



# Calls Info

- Call related questions/”ECSEL HelpDesk”:  
[calls@ecsel.europa.eu](mailto:calls@ecsel.europa.eu)
- Calls coordinator: Simona Rucareanu
- Backup calls coordinator: Bahija Ziane





# Calls Pages

- Calls Page (***general information/updates*** including the links for the proposals submission in the participant portal): [www.ecsel.eu](http://www.ecsel.eu)
- Participant Portal (***detailed information & submission***):
  - available with the calls will be open under:  
<http://ec.europa.eu/research/participants/portal/desktop/en/opportunities/index.html>



# ECSEL Actions 2018

The estimated EU expenditure **174,93 M€**

- **ECSEL-2018-1-IA: Innovation Actions**
- **ECSEL-2018-2-RIA: Research and Innovation Actions**
- **ECSEL-2018-3-CSA for Industry4.E Lighthouse Initiative**
- **ECSEL-2018-4-CSA for Mobility.E Lighthouse Initiative**
- **Public Procurement (2 studies)**



# Calls 2018

- **OPEN CALLS**

- Innovation Action (IA): **ECSEL-2018-1-IA**

- Research Innovation Action (RIA) (two topics):

- **ECSEL-2018-2-RIA**

- **ECSEL-2018-2-RIA-SPECIAL TOPIC**





# Calls 2018

- ECSEL-2018-2-RIA- **SPECIAL TOPIC**



– Open **ONLY TO** the **Major Challenge\***

Chapter 9. Digital Industry

**9.3.2. Major challenge 2** *Implementing AI and machine learning, to detect anomalies or similarities and to optimize parameters*

\* - Major Challenges are described in MASP 2018 (GB 2017.94)



# Calls 2018

- **ECSEL-2018-1-IA and ECSEL-2018-2-RIA**



Open to **ALL** the **Major Challenges EXCEPT\***

Chapter **9. Digital Industry**

**9.3.2. Major challenge 2** *Implementing AI and machine learning, to detect anomalies or similarities and to optimize parameters*

\* - Major Challenges are described in MASP 2018 (GB 2017.94)



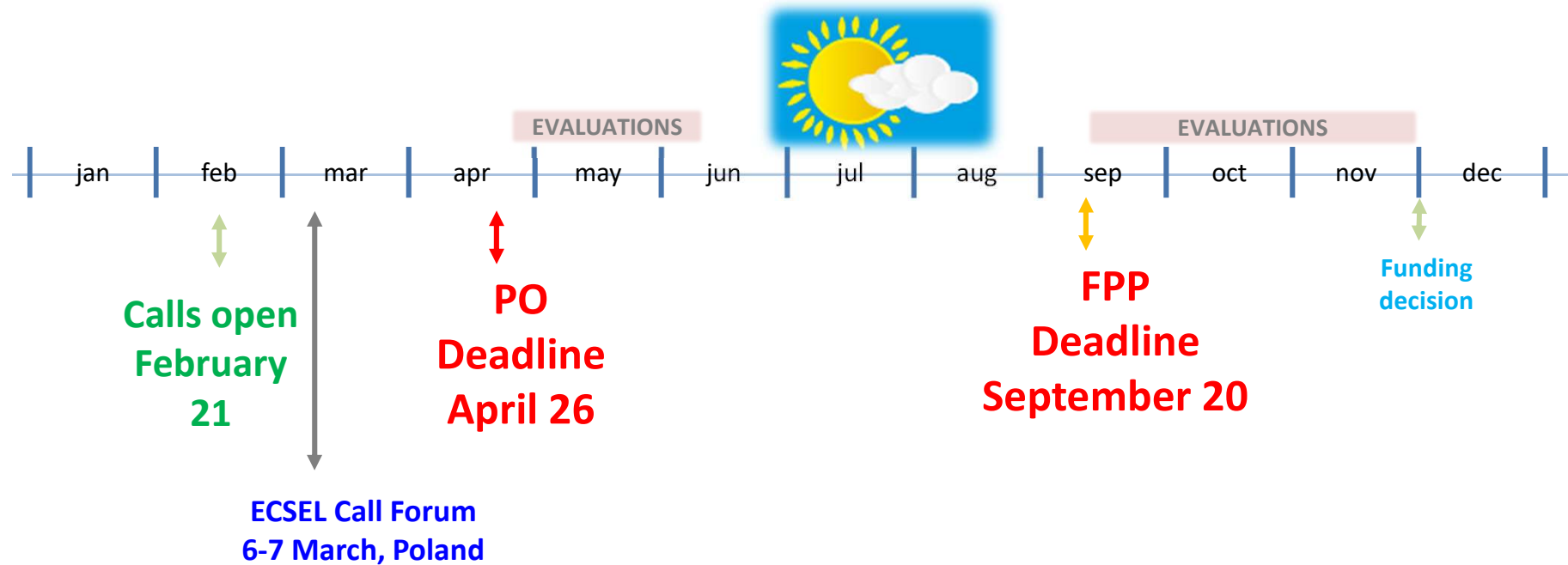
# Calls 2018

- **BOTH CALLS** will be in **TWO** phases:
  - PO (Project Outline) *Compulsory and Gating*
  - FPP (Full Project Proposal)





# Timeline Calls 2018



<http://www.ecsel.eu/web/calls/>



# Calls 2018 Important Dates

Date	Activity
<b>21 February</b>	Calls launch
<b>26 April @ 17:00:00*</b>	<b>Deadline</b> Project Outline (PO)
June	Feedback on PO
<b>20 September @17:00:00*</b>	<b>Deadline</b> Full Project Proposal (FPP)
November	Selection of projects for funding
December - April	Grant Preparation phase



\* - Brussels time (CET Time)



# EU Budget (indicative)



	TRL	EU
ECSEL-2018-1-IA	5-8	110.00M€
ECSEL-2018-2-RIA	3-4	53.33M€
ECSEL-2018-2-RIA-special topic	3-4	10.00M€



# National Budgets (as per 28 Feb 2018)

ECSEL Participating State	2018-1 IA	2018-2 RIA	2018-2 RIA: Special topic	ESIF	All Calls	Total
Austria					7	7
Belgium-Flanders					12	12
Belgium-Brussels					1.5	1.5
Bulgaria						
Czech Republic	1.5	1	0.5			3
Denmark						
Finland	2	2	1			5
France (4)						
Germany					30	30
Germany-Saxony (only for Saxonian partners)	9	4				13
Greece						
Hungary					1	1
Ireland					2	2
Israel					6	6
Italy (3)	15	2		5		22
Latvia					0.42	0.42
Malta						
Netherlands	10	10				20
Norway					2.2	2.2
Poland					1.5	1.5
Portugal						
Romania (5)				2.6		2.6
Slovak Republic					0.8	0.8
Spain					6	6
Sweden					5.5	5.5
Switzerland						
United Kingdom						
Turkey					3	3
Total	37.5	19	1.5	7.6	78.92	144.52

(3) 15 M€ from MISE, 5 M€ from ESI. Both to be confirmed

(4) A budget is available; the amount will be communicated later

(5) For all Calls





# Two/Three Funding Sources

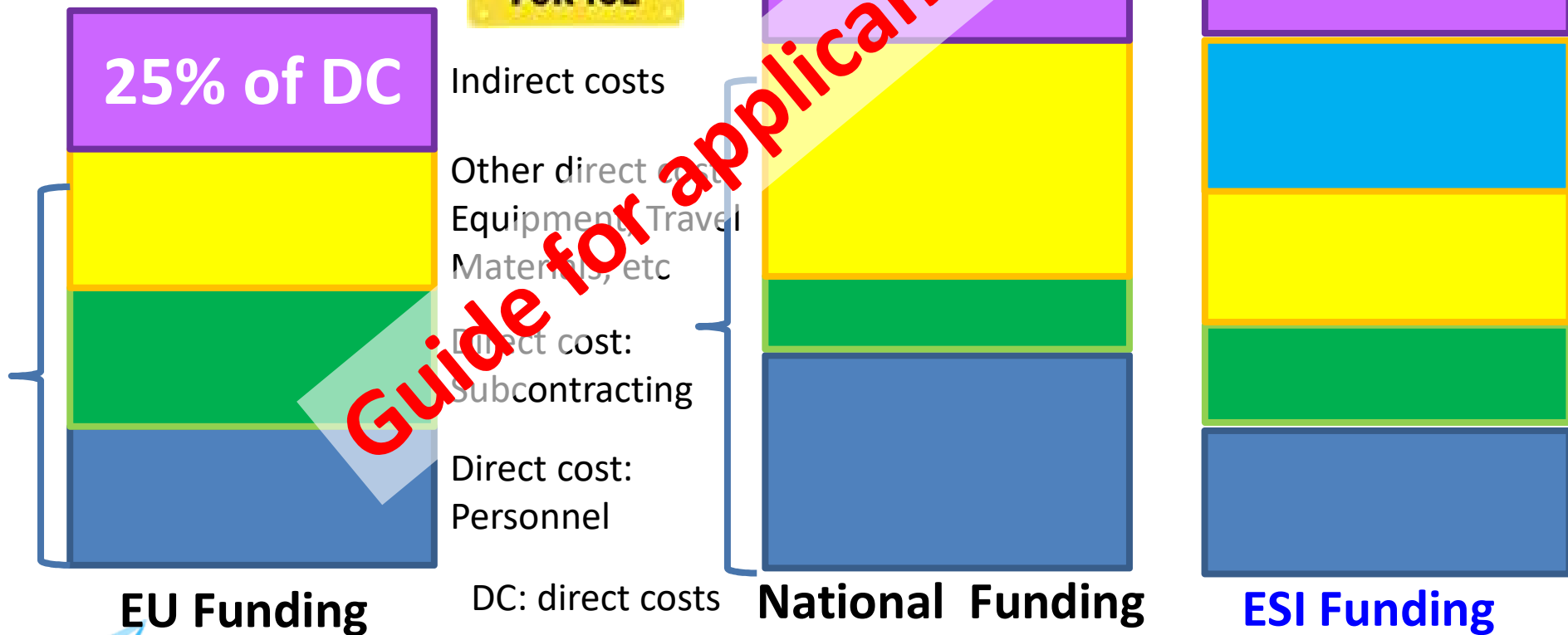
## Two/Three Total Eligible Costs!!

Costs according to H2020 rules



Costs according to national rules

Costs according to ESIF rules



# European Structural and Investment (ESI) Funding

- If activities with costs are funded through ESI funds, then those activities **cannot obtain ECSEL-EU funding**.
- Various possibilities to include activities funded by ESI funds described in the Guide for Applicants
- Main issue: **no overlap**
- Risk mitigation: what happens if the activity does not get the ESI funding?



# CAPPING



## ECSEL-2018-1-IA

- The EU contribution per project is capped at **30M€**
- the maximum EU funding per partner in a project is limited to **50%** of the total EU funding for the project



# CAPPING



## ECSEL-2018-2-RIA

- The EU contribution per project is capped at **15M€**
- the maximum EU funding per partner in a project is limited to **40%** of the total EU funding for the project

## ECSEL-2018-2-RIA-SPECIAL TOPIC

- the maximum EU funding per partner is limited to **10%** of the total EU funding for the project

***EU Budget allocated for this topic: 10M€***

***ONLY ONE PROPOSAL WILL BE SELECTED***





# EU Reimbursement rates

The **MAX** funding percentages of the EU contribution are **different than under H2020**.

Type	RIA	IA
For profit (non SME)	25%	20%
SME	30%	25%
University/Other	35%	35%

EU Contribution as % of the eligible cost according to H2020 (beneficiaries may ask for a lower contribution)

The proposals are encouraged to reach a 1:1 ratio EU/national funding (project level)

National contributions: vary per state, see Chapter 9 of ECSEL JU Annual Work Plan 2018! **Contact the national authorities to inquire about the specificities!**



# Thresholds

## ECSEL-2018-1-IA

- PO phase – score resolution 0.5

Criteria	Range	Threshold
Excellence	0-5	2.5
Impact	0-5	2.5
Quality and efficiency of the implementation	0-5	2.5
Total		10

- FPP phase – score resolution 0.1

Criteria	Range	Weight**	Threshold*
Excellence	0-5	1.0	3.0
Impact	0-5	<b>1.5</b>	3.0
Quality and efficiency of the implementation	0-5	<b>0.7</b>	3.0
Total			10

\* - threshold applies to unweighted score

\*\* - the weight is only used to establish the ranking of the proposals



# Thresholds

## ECSEL-2018-2-RIA

- PO phase – score resolution 0.5

Criteria	Range	Threshold
Excellence	0-5	2.5
Impact	0-5	2.5
Quality and efficiency of the implementation	0-5	2.5
Total		10

- FPP phase – score resolution 0.1

Criteria	Range	Weight**	Threshold*
Excellence	0-5	1.0	3.0
Impact	0-5	<b>1.0</b>	3.0
Quality and efficiency of the implementation	0-5	<b>0.7</b>	3.0
Total			10

\* - threshold applies to unweighted score

\*\* - the weight is only used to establish the ranking of the proposals



# Thresholds

## ECSEL-2018-2-RIA-SPECIAL TOPIC

- PO phase – score resolution 0.5

Criteria	Range	Threshold
Excellence	0-5	2.5
Impact	0-5	2.5
Quality and efficiency of the implementation	0-5	2.5
Total		10

- FPP phase – score resolution 0.1

Criteria	Range	Weight**	Threshold*
Excellence	0-5	<b>1.3</b>	3.0
Impact	0-5	1.0	3.0
Quality and efficiency of the implementation	0-5	<b>0.7</b>	3.0
Total			10

\* - threshold applies to unweighted score

\*\* - the weight is only used to establish the ranking of the proposals





# Mandatory Page Limits

- Use the default template and fonts!
  - Chapter **EXCELLENCE - 60 pages**
  - Chapter **IMPACT - 60 pages**
  - Chapter **IMPLEMENTATION - 60 pages**
- Sections on participants description, ethics, public summary are excluded from the page limit
- The page limits and sections subject to limits will be clearly indicated in the proposal templates.
- Expert evaluators will be instructed to disregard the excess pages.



# The Project Outline (PO)

- **Blocking** if under threshold
- Participants, budgets: **as complete and precise as possible BUT** changes are possible afterwards, though limited!
- Part B of the Proposal to address
  - Section 1. **Excellence (complete)**
  - Section 2. **Impact (partial)**,
  - Section 3. **Implementation (partial)**Fill in as indicated in the template!



# The Project Outline (PO)

- Fill in the other Sections *if available info*:
  - Section 4. Members of the consortium;
  - Section 5. Ethics and Security;
- Section 6. **Publishable Summary** (mandatory!!!)



**Successful proposals (above threshold) invited to FPP!!!**



# Full Project Proposal (FPP)

- Part B of the Proposal to be fully addressed
  - Section 1. **Excellence (complete)**
  - Section 2. **Impact (complete)**,
  - Section 3. **Implementation (complete)**
- Section 6. **Publishable Summary (mandatory!!!)**



**DO NOT FORGET: a draft plan for the exploitation and dissemination is an admissibility condition for FPP!!!**



# Submitting a proposal

1. Check out the [ECSEL website](#) and the H2020 participant portal
2. Documents
3. Follow the instructions in the Templates





# Documents

**Annexes  
5(IA), 6(RIA)**

**Chapter 9**

- **Work Plan:** schedule, budget, topics, evaluation procedure including criteria, national rules, [TRLs](#)
- **Guide for applicants:** further details on Part A, B and C; regional funding; further explanation on evaluation criteria; ESIF; Lighthouses;
- **MASP 2018 :** Look for topic/major challenges descriptions
- **Part B Template: A MUST!**



# Proposal submission

Proposals can **ONLY** be submitted through the *Participant Portal using the specific link* (one for IA, one for RIA and one for RIA-special topic)



Online manual for H2020: [http://ec.europa.eu/research/participants/docs/h2020-funding-guide/index\\_en.htm](http://ec.europa.eu/research/participants/docs/h2020-funding-guide/index_en.htm)

IT HelpDesk: <http://ec.europa.eu/research/participants/api/contact/index.html>



# Proposal submission



- Proposals must be complete:
  - **Part A:** administrative information including financial information (costs, funding) – filled in “online” each beneficiary can fill in its own data
  - **Part B:** technical description – upload as pdf file (**mandatory** to use the provided Template!)
  - **Part(s) C (specific for ECSEL): country specific information;** upload a password- protected zip file for each country by using the dedicated placeholder; email the ECSEL office to get the password ([calls@ecsel.europa.eu](mailto:calls@ecsel.europa.eu))
  - **EoI for Lighthouse Initiative (LI):** if a proposal wants to either join an existing LI or propose a new LI (optional)



# Adhering to an existing LI

- Does not affect the evaluation of your proposal!
- Your project proposal **MUST NOT** refer to the Lighthouse Initiative
- Introduce the EoI to adhere to a LI by uploading the pdf document in the dedicated placeholder in participant portal (similar to uploading the Part C)



# Proposing a new LI

- Does not affect the evaluation of your proposal!
- Your project proposal **MUST NOT** refer to the Lighthouse Initiative
- Introduce the EoI to adhere to a LI by uploading the pdf document in the dedicated placeholder in participant portal (similar to uploading the Part C)





# Proposal submission

- ✓ *Don't wait the last minute to submit the proposal! Part A requires a rather significant amount of data from each participant – start early! Your computer might need some adjustments (e.g. your firewall is blocking to fill in the Part A)*
- ✓ *Each participant needs to have a PIC number in order to be added to the consortium (only the coordinator can add participants to the consortium and only the coordinator can submit the proposal!)*
- ✓ *Make sure you use the correct link before starting to fill in the data: for example for a RIA special topic use the RIA special topic link as proposals cannot be moved from one call to another; if you used the wrong link you have to start all over again in the correct link!*
- ✓ *For a given proposal can be several submission sessions (the new version will overwrite the old version and only the newest version will be kept in the system)!!*
- ✓ *Caution when uploading documents (Part B/ Part(s) C/EoI for LI) make sure the intended version was uploaded and not one stuck in your browser “cache”. Check after uploading – e.g. close the browser/login again and download the document!*



# Proposal submission

- ✓ *Participants are recommended to check/update their legal data and fill in the data as appropriate as possible.*
  - ❑ *If selected for funding the SMEs will be requested to do a self-assessment. If the results of self-assessment is that the respective participant is not an SME though it declared itself a SME when the proposal was submitted the funding will be adjusted accordingly (reduced to correspond to 'for profit non SME)*
  - ❑ *If a participant is a non-for profit organization but at the proposal submission (FPP) filled in the funding rate of a for profit organization, during the GAP phase it will be very difficult to adjust (increase) the funding rate as the EU budget was already allocated.*
  - ❑ *British participants are kindly advised to monitor the Participant Portal for the most up to date information. ECSEL JU will apply the same rules as in H2020*

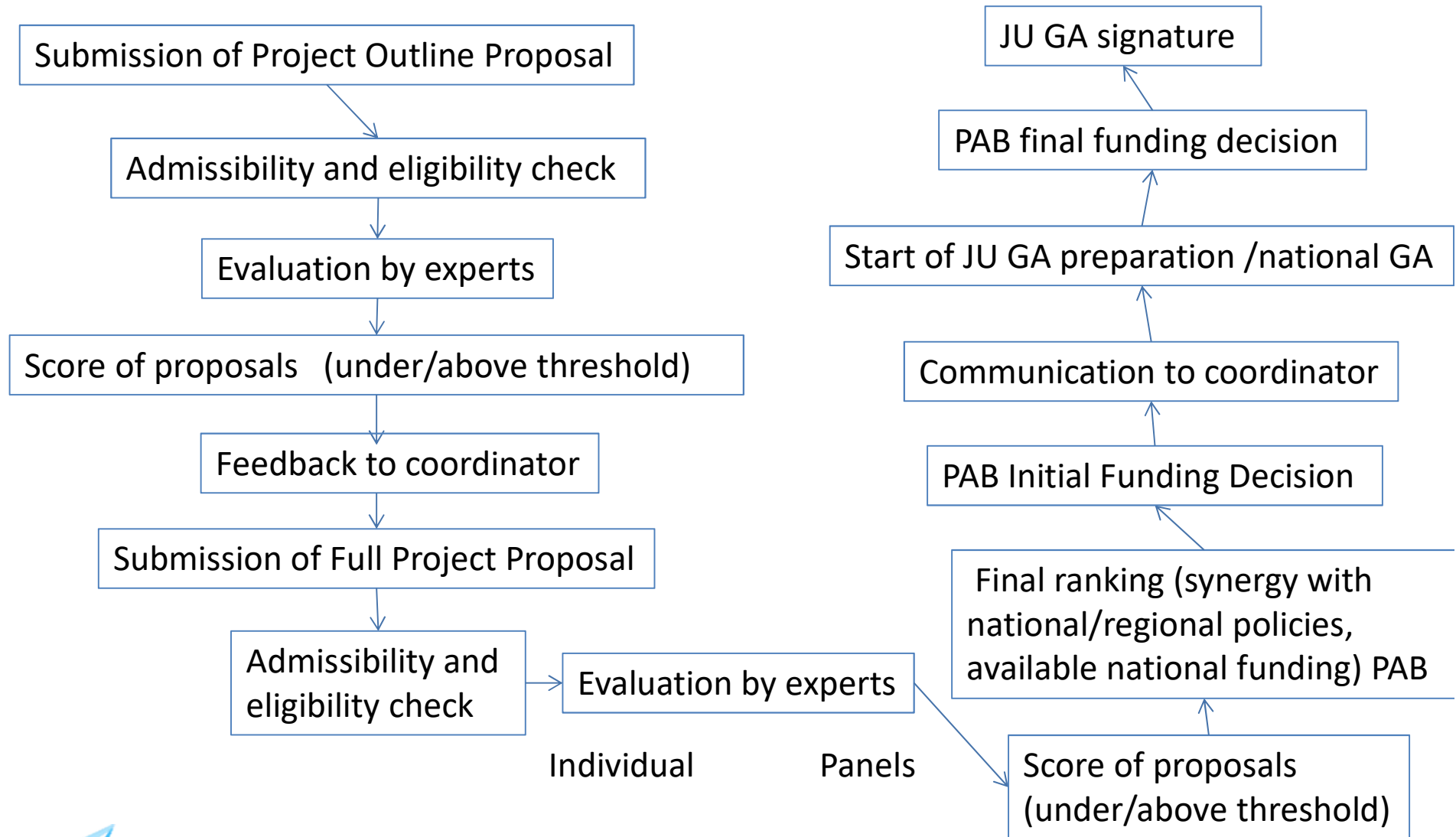


# Proposal submission

- ✓ *Coordinators of proposals that request more than 500,000.00 € EU funding will have to undergo a financial viability check (except for public bodies, higher or secondary education establishments, international organization or body whose participation is guaranteed by the government of an EU country or associated country)*
- ✓ *Therefore the coordinators are advised to use the [self-check tool](#) available in the Participant Portal and in case of weak or insufficient financial capacity to already prepare an action plan*



# From proposal submission to grant signature

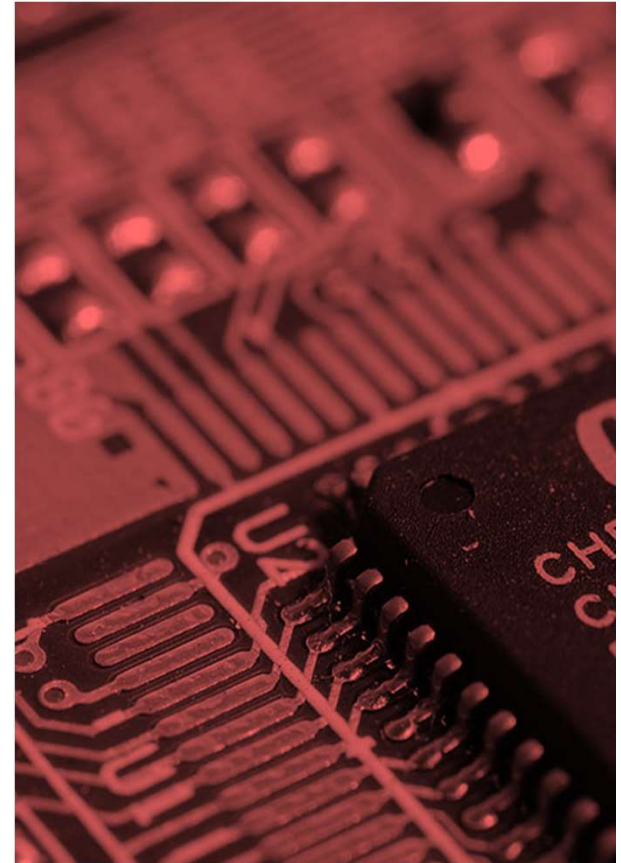
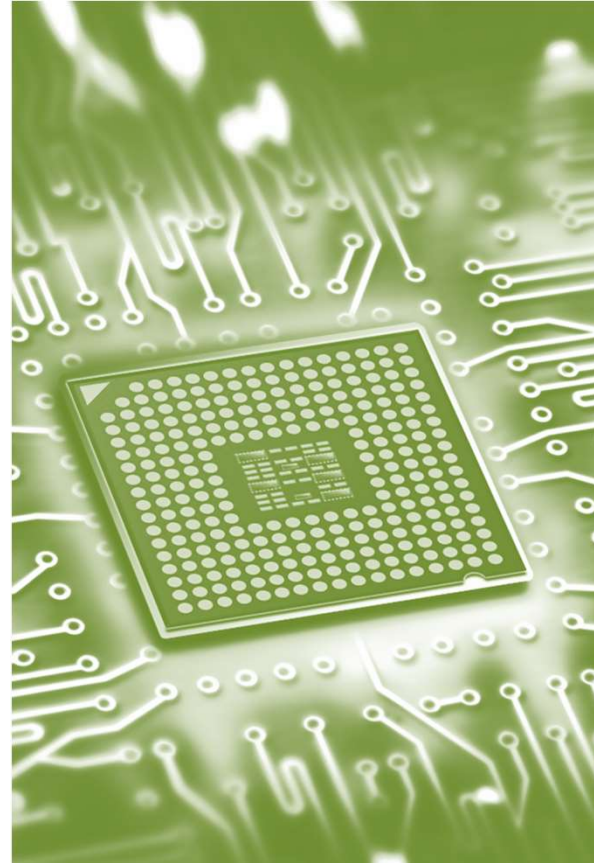


# Grant Agreement

- V2.0 for projects of calls 2014 to 2016
- V3.0 for projects of calls 2017, and via amendment also for calls 2014 to 2016
  - some simplifications for cost eligibility
- V4.0 july 2017
  - possibility for internal cost based on unit cost according to accounting rules of beneficiary
  - payment to researchers in frame of H2020 cannot be lower than national contracts (EU-13)
- V5.0 dec 2017 – for projects of calls 2017 and 2018
  - Article 29.3 - “Open access to research data”
  - Articles 34 - “Ethics and research integrity”
  - Minor drafting changes and correction of clerical mistakes







## Q&A

---

For updates check: <https://www.ecsel.eu/calls/calls-2018>

E-mail: [calls@ecsel.europa.eu](mailto:calls@ecsel.europa.eu)

